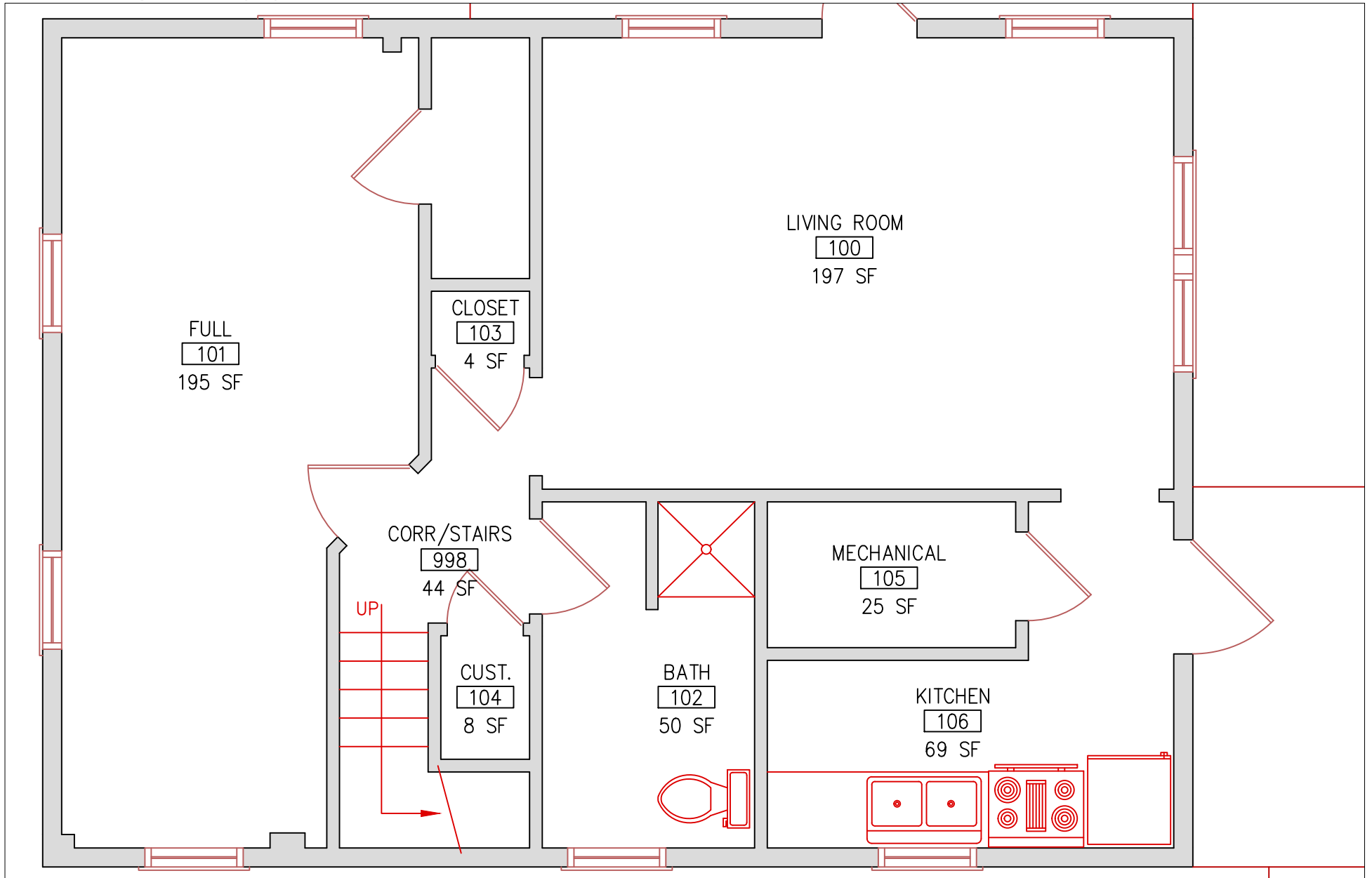


# SCHOOL HOUSE FIRST FLOOR

FIRST FLOOR BED COUNT:  
FULL: 1 (2)

TOTAL CAPACITY = 1 (2 if 2 in full bed)

Total Capacity (1st & 2nd Floors) = 5  
Total Capacity (1st & 2nd Floors if 2 in full bed) = 6  
DOUBLE = 2 twin beds  
FULL = 1 full size bed



# SCHOOL HOUSE SECOND FLOOR

SECOND FLOOR BED COUNT:  
DOUBLES: 2(4)

TOTAL CAPACITY = 4

Total Capacity (1st & 2nd Floors) = 5  
Total Capacity (1st & 2nd Floors if 2 in full bed) = 6

DOUBLE = 2 twin beds  
FULL = 1 full size bed

